

CERTIFICATE OF LOCATION OF GOVERNMENT CORNER

EAST QUARTER Corner of Section 24, Township 106, Range 42, 5TH P.M.

STATE OF MINNESOTA, County of MURRAY

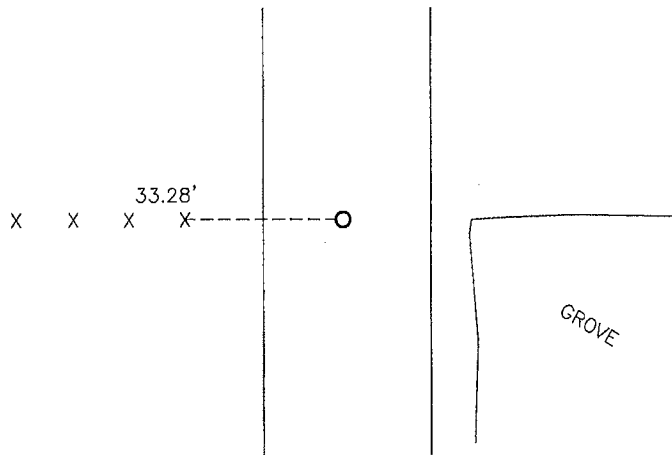
At the corner location shown on the sketch:

On 5/31/13 found a field stone
DATE

left monument as found, lowered monument, removed monument (explain)

On 5/31/13 placed a 5/8" iron w/seal #43844
DATE

SKETCH OF REFERENCE TIES



Minnesota State Plane Coordinate System Murray County Datum NAD83 (1996)
N: 144989.864
E: 485011.046

Nail and seal in end fence post West 33.28'

Statement of evidence relative to this corner location is on back of page.

I hereby certify that this document and the data contained herein was prepared by me or under my direct supervision.

[Signature] 2/4/14
SIGNATURE DATE

Registration No. 43844

- Land Surveyor, Professional Engineer
 County Surveyor, County Engineer

OFFICE OF THE COUNTY RECORDER

County of _____

I hereby certify that this document was filed in the Co. Recorders office at _____ M on the _____ day of FEB 5 2014 A.D. 20____

County Recorder [Signature]

By _____, Deputy

DOCUMENT NO. _____

Statement of Evidence

In 1861, J.W. Myers did the original survey of the east line of the township.

On November 13, 1901, J.W. Woolstencroft, Murray County Surveyor, recorded a 5"x8"x14" stone at the corner. It is in line with east and west fence line.

On May 31, 2013, Bueltel-Moseng Land Surveying dug with a backhoe and found a large field stone 5'± below the road surface. We set a 5/8" iron with seal #43844 over found field stone at the road surface. It is in line with fence to the west and grove line to the east.